

VI. NEW HOMOPTERA RECEIVED FROM THE NEW MEXICO AGRICULTURAL EXPERIMENT STATION.—I.

BY CARL F. BAKER, FORT COLLINS, COLO.

In several very interesting lots of Homopterous insects received from Prof. T. D. A. Cockerell, of the New Mexico Agricultural College, were included a number of new species in the families Fulgoridae, Bythoscopidae and Jassidae. In a series of papers of which this is the first, these species will be characterized, and attention called to their affinities and the localities in which they were taken.

Thamnotettix lucida, n. sp.—Pale, clear, slightly yellowish, green, entirely without markings or dark colorations. Elytra hyaline. Length male 5.5 mm.

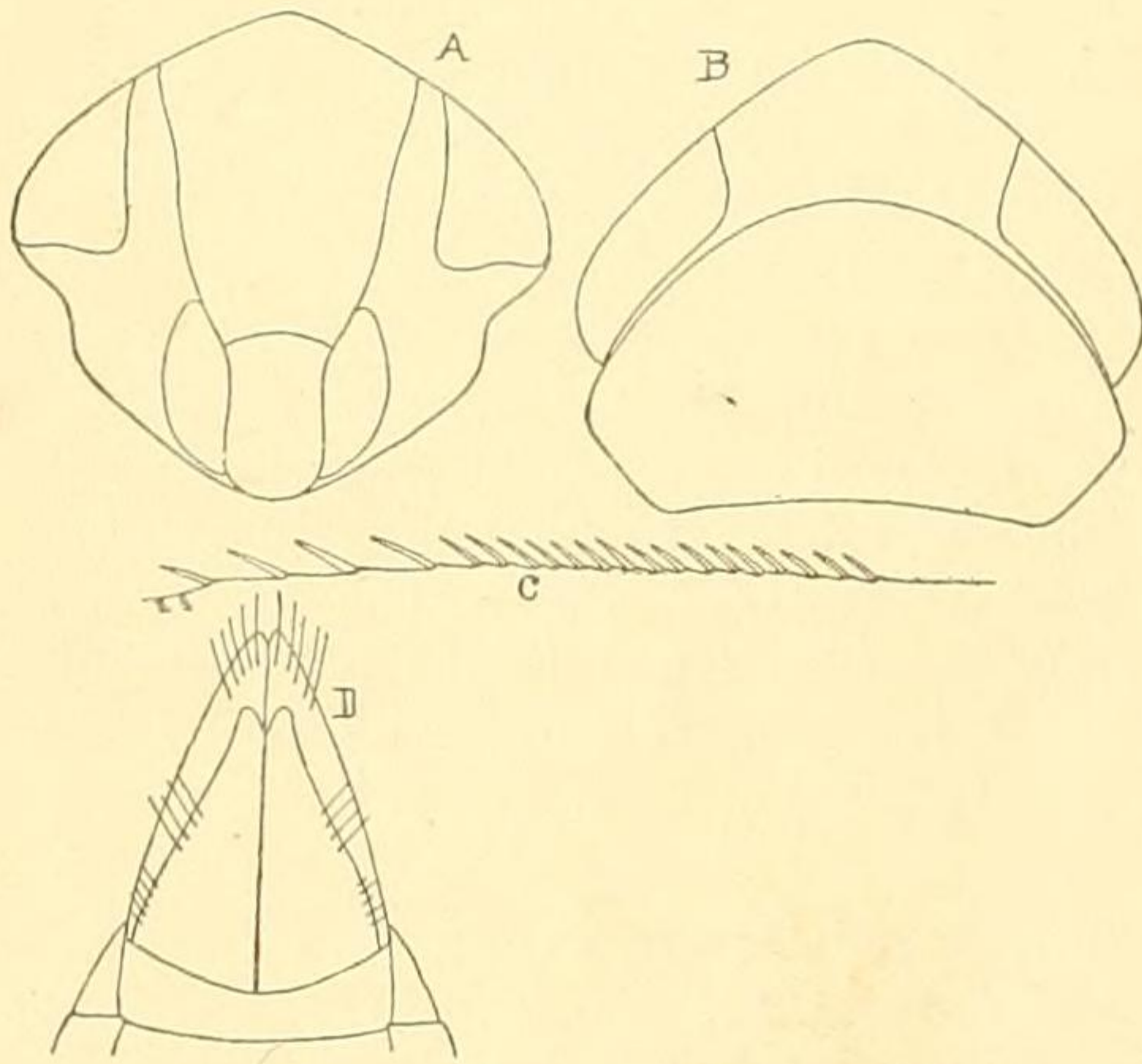


Fig. 1. *Thamnotettix lucida* n. sp. A, face; B, dorsum of head and pronotum; C, spines on inside of hind tibia; D, apex of male abdomen beneath.

Male.—Face a tenth wider than long; length of clypeus once and two-thirds the width at base, slightly constricted just before base, the basal suture strongly curved; lorae as long as clypeus and two-thirds as broad; genae with margin deeply emarginate below eyes, from this to tip of clypeus nearly rectilinear, very narrow below the lorae; front little

more than one-fourth longer than broad, little less than twice the length of the clypeus, sides slightly incurved at antennae, gradually narrowing below. Disc of vertex evenly, slightly convex, with a small depressed area on either side near the base and meeting the face at a very obtuse angle; length at middle once and a half that at the eyes, width between eyes once and five-sevenths the length. Width of pronotum about once and four-fifths the length, the length nearly twice that of the vertex, curvature about five-ninths of the length. Scutellum and venation of elytra normal. Spines on inside of upper two-thirds of hind tibiae regularly arranged and very unusually numerous. While in most others there are but eight or ten spines in this region, in this species there are about 16.

Color light green, slightly tinged with yellowish which is more noticeable on the abdomen. Last abdominal segment with plate, valves, and pygofers light bluish green, the pygofers furnished at tips with numerous strong blunt bristles which are white and conspicuously brown-tipped. Legs pale, some of the spines brown-tipped. Elytra hyaline, apical areoles somewhat translucent.

Described from a single male taken at San Augustine (Ckll. 2142). This insect somewhat resembles *T. atridorsum* in form but is a very much smaller and more delicate species. It is nearly allied to *T. inornata* and *T. aureola*, but differs most noticeably from those species in being entirely without dark markings. *T. flavicapitata* is a smaller yellowish and rufous species, with a shorter vertex and smoky elytra. In the arrangement of spines on the hind tibiae, *T. lucida* differs widely from any *Thamnotettix* I have seen.